

Olde Atlanta Garden Club

Turf Management

By

Patrick Mawhinney

Copyright Prestige Shrub Tree & Turf 2015

→ In Atlanta we deal with

- Bermuda (Hybrid, Common, Common Hybrid)
- Zoysia (Emerald, Meyer, Jamur, Empire, Zenith, others!)
- Centipede
- There are some St. Augustine lawns but few and far between.
- Hybrid Fescue

Bermuda Start Up Schedule:

- Pre-emergent and post-emergent applied now
- Scalp Bermuda in Mid – Late March
- Core Aerate
- Fertilize Bermuda with 1# of Nitrogen in late March

Fescue Start Up Schedule

- Pre-emergent and post-emergent applied now
- Fertilize February 1, March 1 and April 1 with 1# of Nitrogen
- No more fertilizer until Fall

Zoysia Start Up Schedule:

- Pre-emergent and post-emergent applied now
- Low cut Zoysia in mid – late March
- If needed core aerate
- If needed de-thatch (usually only needed with Emerald Zoysia)
- Fertilize Zoysia with 1# of nitrogen in late April or early May

Bermuda Fertilization:

- Apply 1# N using a 50% slow release fertilizer in May, June, July and August
- Stop fertilizing by the end of August

Zoysia Fertilization:

- Apply 1# N using a 50% slow release fertilizer in June, July and August

Fescue Fertilization:

- Fertilize February 1, March 1 and April 1 with 1# of nitrogen
- No more fertilizer until Fall
- Aerate and seed in September or October

Bermuda Mowing

- After the initial scalping maintain at 1.5" - 2"
- Mow weekly
- If firing occurs raise mowing height.
- Keep blade sharp

Zoysia Mowing

- After the initial scalping maintain at 2" - 3"
- Mow weekly
- If firing occurs raise mowing height
- Keep blade sharp

Fescue Mowing

- After the initial scalping maintain at 3" - 4"
- Mow weekly
- Keep blade sharp

Winter Kill In Reel Mowed Bermuda



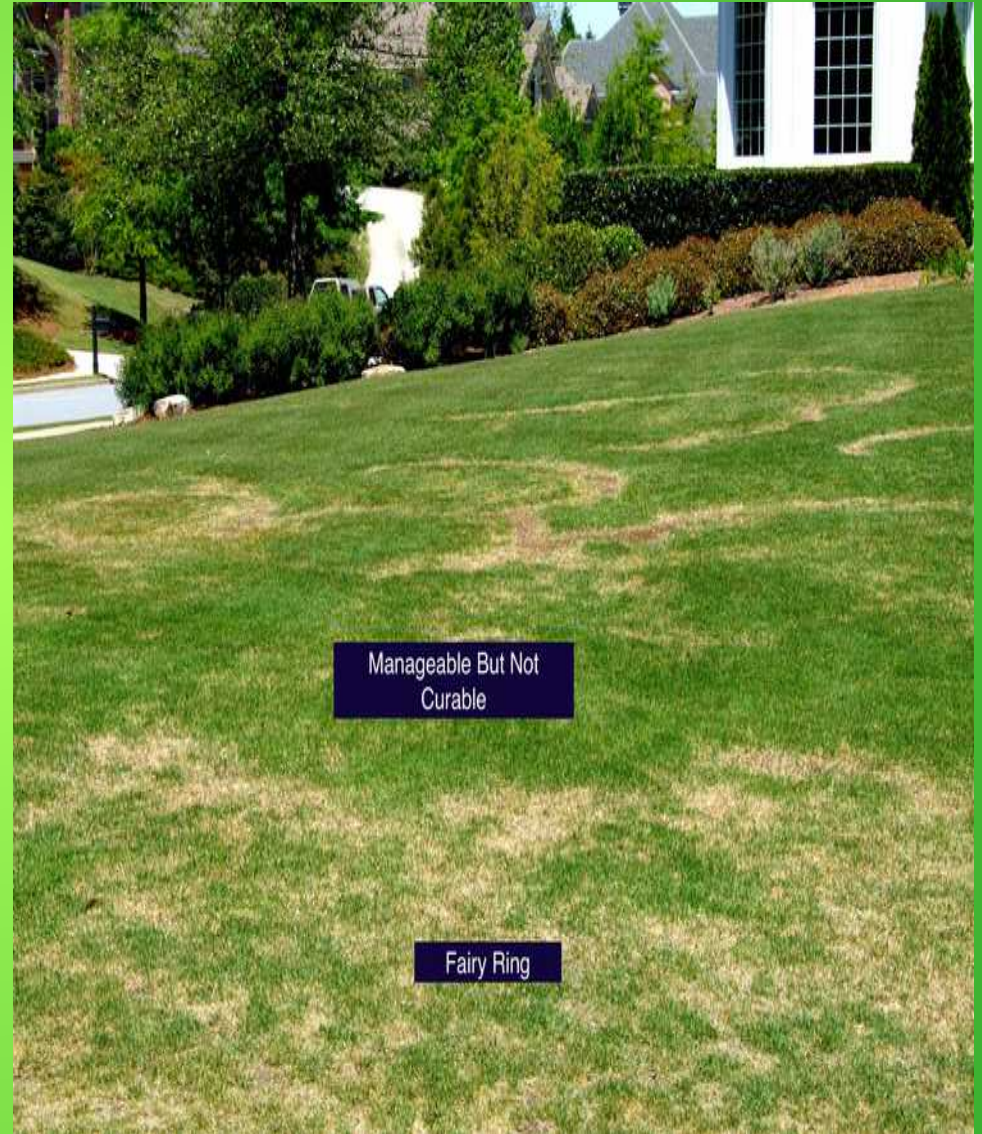
Winter Kill In Reel Mowed Bermuda

Watering

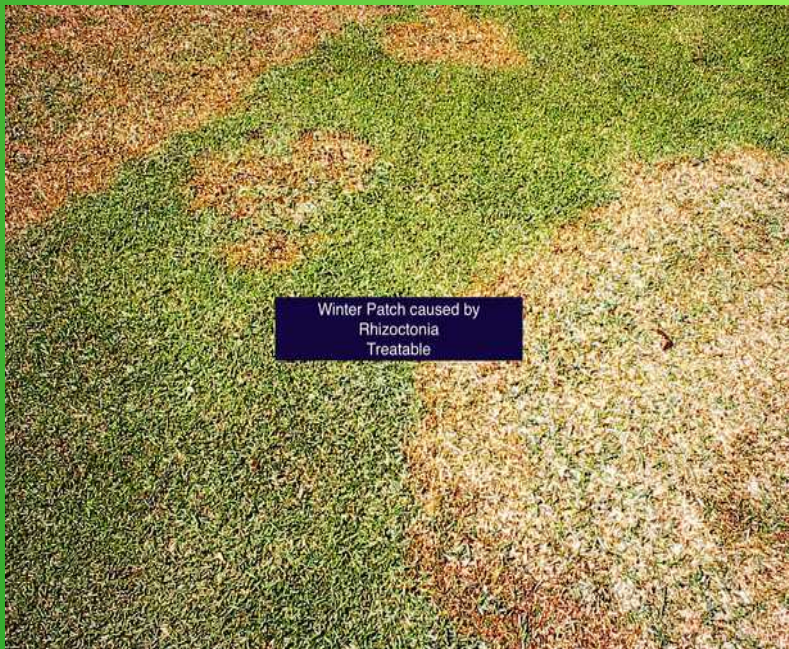
- Water all turf one Time per week To get 1" of water per week.
- Irrigation or rain Is fine
- Above 95° you may need to water two times per week



Warm Season Turf Disease



Warm Season Turf Disease



Warm Season Turf Disease



Fescue Turf Disease



Weeds

Almost All These Weeds Can Be Prevented With
Correct Application of Pre-Emergent
EXCEPT A FEW!

There Is Really No Such Thing As Weed Free,
Especially If You Are Trying To Grow Turf Where
IT DOES NOT BELONG!

Weeds



Weeds



Weeds



Weeds



Weeds



Weeds



Weeds



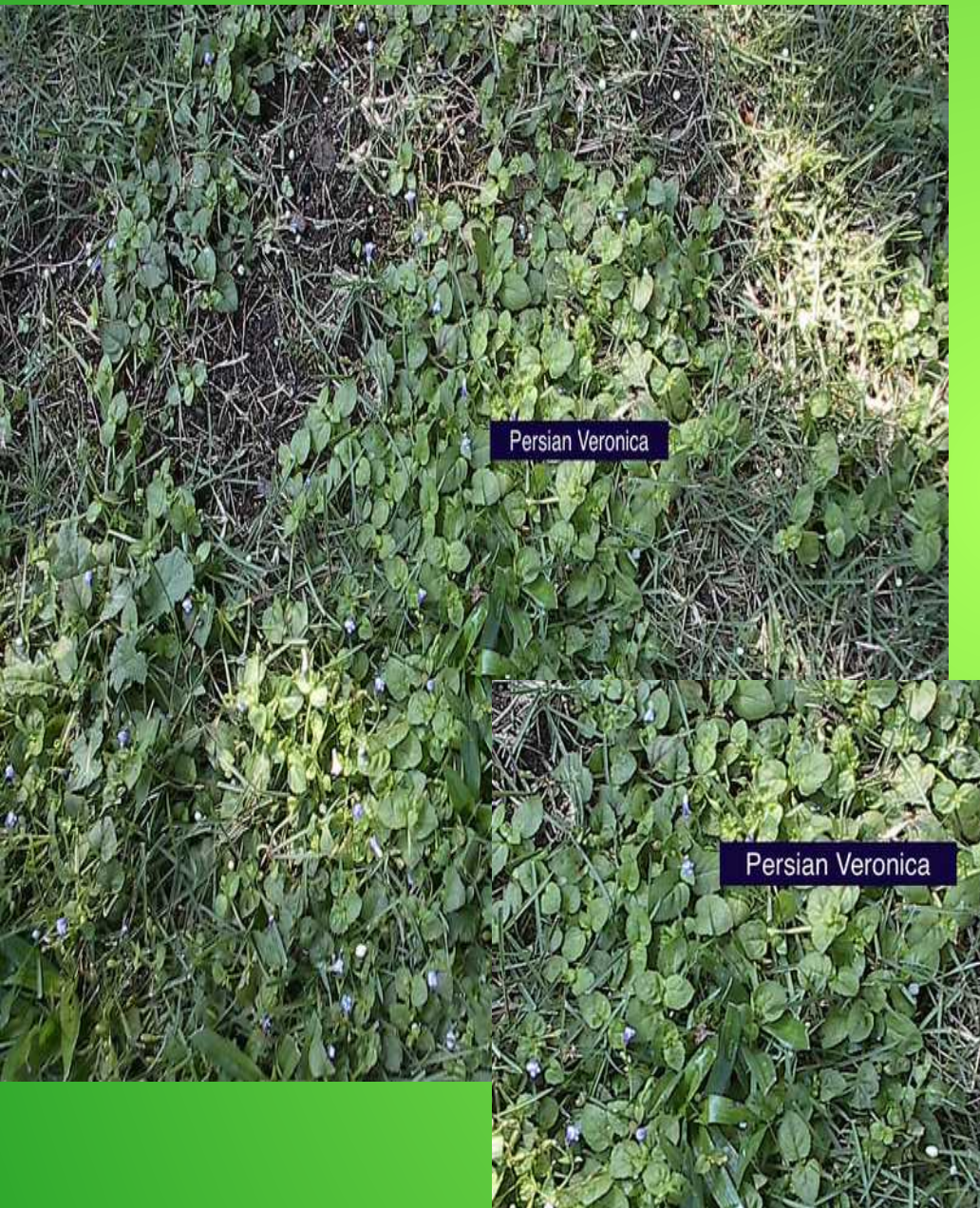
Weeds



Weeds



Weeds



You Can't Fix Broken!

- All turf programs work with turf that is in reasonably good condition. You can not make satisfactory improvements on severely declined turf with a lawn care program.

Never Going To Happen



Olde Atlanta Garden Club

Prestige Shrub & Tree, Ltd.

www.prestigestt.com

770-476-7781

Consultation \$150/hr.-- One hour minimum

7 Visit Lawn Program -- \$57.00/treatment minimum

6 Visit Shrub & Tree Care Program -- \$65.00/treatment minimum

You can find this seminar at www.prestigestt.com

Click on the "Pest, Problems & Solutions" tab and then search for seminars.